

JEPPESEN

28 FEB 96

19-1

LANZEN

TURNAU

AUSTRIA

Airspace (D) Tauern Ost II/Applicable at MNM 9000'

WIEN RADAR **133.80**

LOGL

Elev **2575'**/785 m

N47 33.4

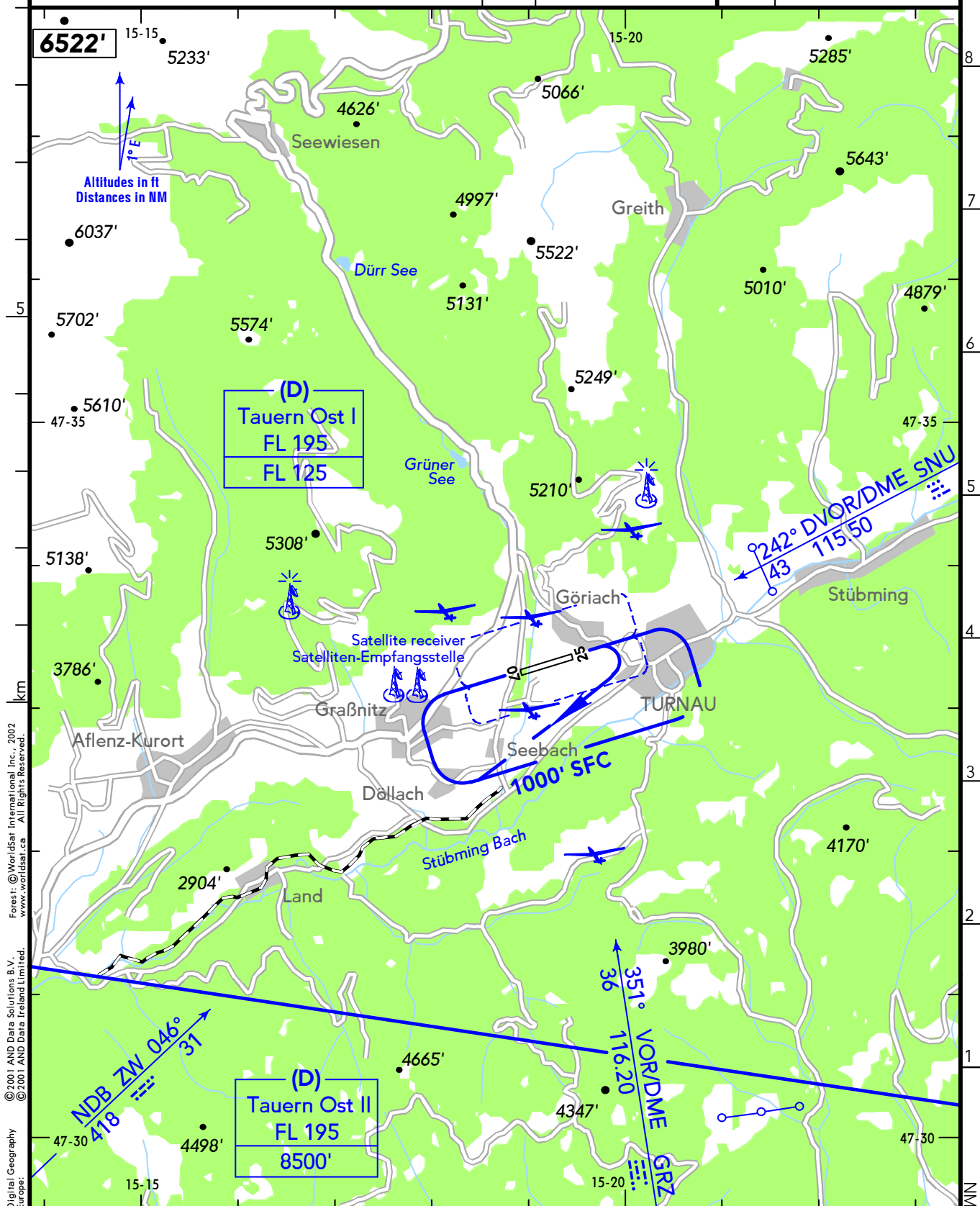
E015 19.5

3.8 NM E Aflenz-Kurort

(AFIS) 25 NM/3000' AAL

LANZEN-TURNAU FLUGPLATZ **122.50** (ge)

RWY	ILS	RWY	ILS



CHANGES: Communications - Airspace - Direction arrows.

© JEPPESEN, 1986, 1996. ALL RIGHTS RESERVED.  
 BOTTLANG AIRFIELD MANUAL®

LANZEN  
TURNAU  
AUSTRIA

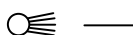
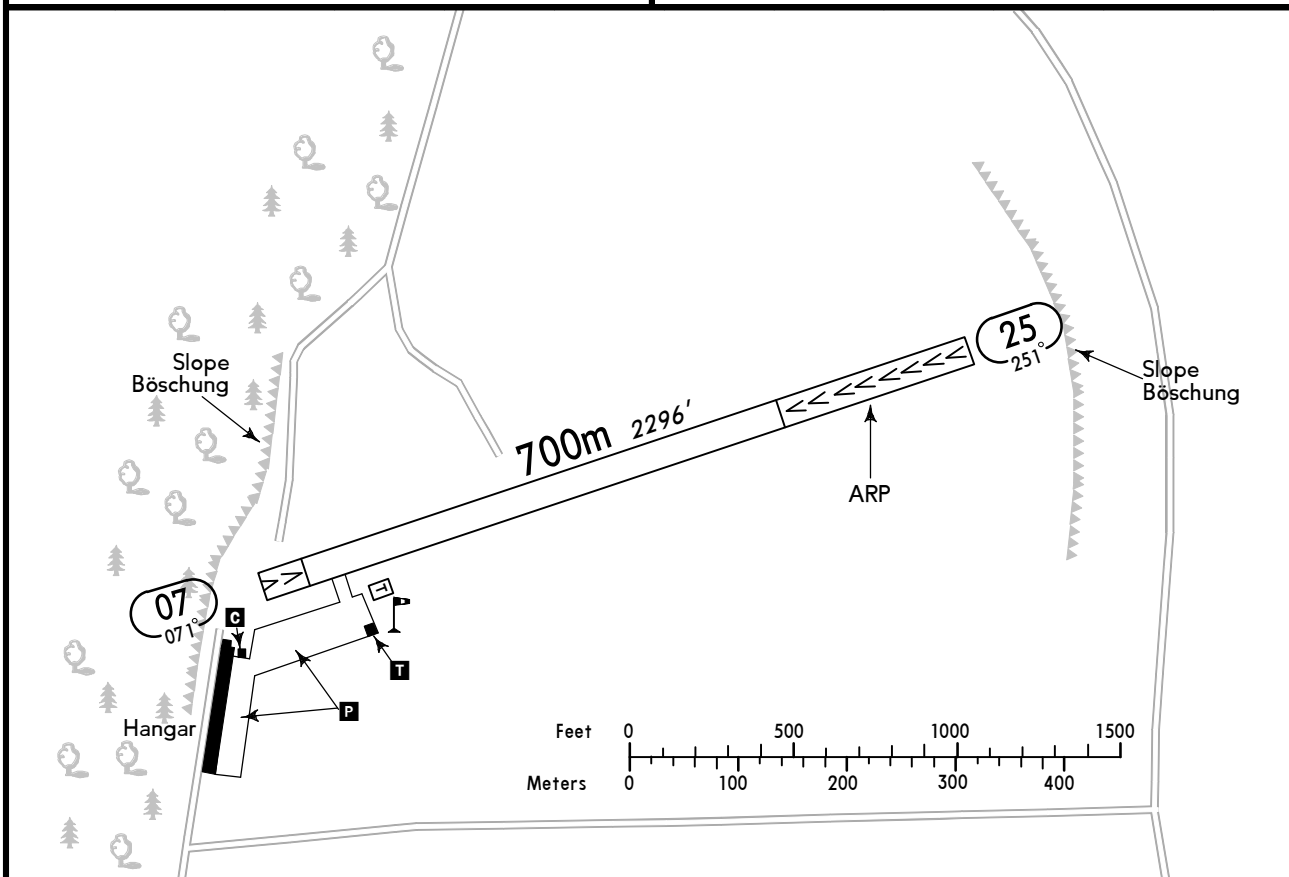
19-2 28 FEB 96

JEPPESEN



(FIS)

WIEN INFORMATION 124.40



RWY No	Dimension (m) - Surface	TORA (m)	LDA (m)	Strength	Lights
07	700 x 30 Grass	505	670	6.3t AUW	—
25		505	475		

Contact LANZEN-TURNAU FLUGPLATZ well in advance.

TAX restricted to RWY.

Steep slope immediately in front of both THRs.

Look out for gliders.

Avoid residential areas near airfield.

LANZEN-TURNAU FLUGPLATZ frühzeitig rufen.

Rollen nur auf der S/L-Bahn.

Steilböschung unmittelbar vor beiden Landebahn-Schwellen.

Auf Segelflüge achten.

Wohngebiete in Platznähe meiden.